



## Samsung SMART Signage QMR Series

Display any content in ultra-high definition with incredibly rich color on slim, efficient signage.

Through intelligent UHD upscaling technology, Samsung's QMR series performs edge restoration and noise reduction to deliver UHD picture quality even with lower resolution content. As an added benefit, the QMR series also features reliable, non-glare panels that provide better visibility from all angles. Backed by Tizen 4.0, the QMR series provides reinforced capability with multiple web formats and secured protection. Additionally, its new slim design simplifies wall mounting and ensures seamless installation.

### Highlights

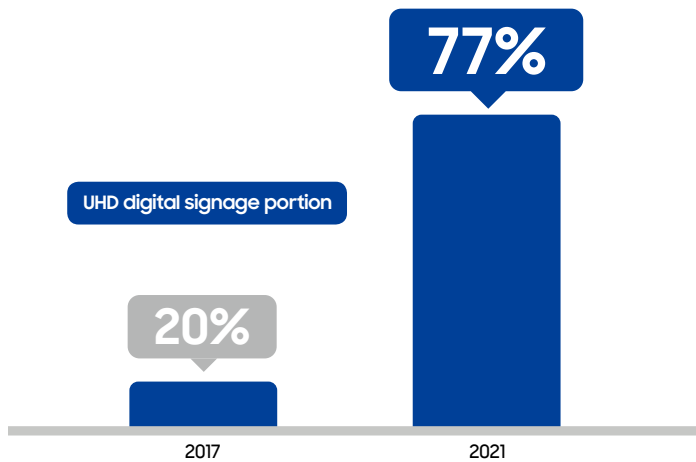
- Engage customers with lifelike images through ultra high-definition resolution
- Deliver UHD-level picture quality even with lower resolution content through innovative UHD upscaling technology and unique picture-enhancing features
- Dynamic Crystal Color allows viewers to enjoy a wider spectrum of colors, up to one billion shades
- New symmetrical, slim design simplifies installation and complements any environment.
- Secure, PC-free operation through Knox and rigid three-layer protection
- Reliable, non-glare panels provide better visibility from all angles, anytime of day allowing businesses to deliver accurate information 24/7.

**SAMSUNG**

## Industry trend

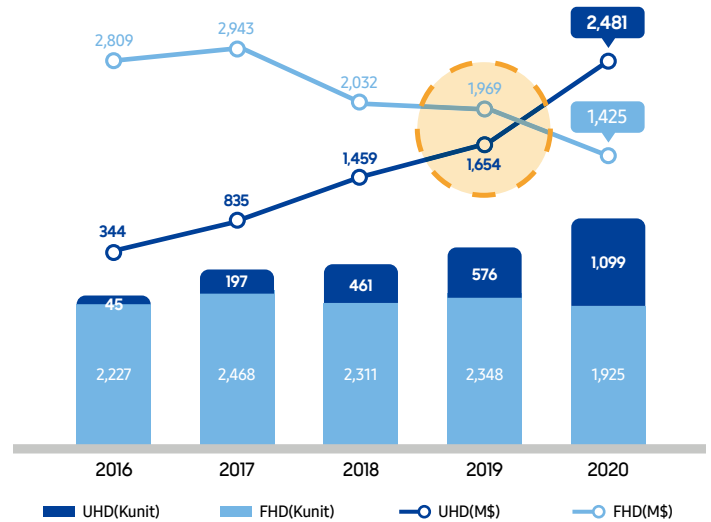
With visual display technology improving across devices, viewers have developed an ever-growing expectation for better picture quality. Additionally, the market has been flooded with a wide variety of color technologies and it's becoming increasingly important for businesses to have rich and vivid display capabilities. As UHD resolution continues to grow in popularity, it is essential for businesses to deliver superb picture quality for their customers. Low quality displays and signage can create negative perceptions of a business. While much content is still being produced at a lower resolution, through Intelligent UHD upscaling technology, Samsung's QMR series is able to upscale the low resolution content to UHD picture quality.

### UHD resolution is must-have feature in the future



\* Source : IHS '18.2Q Final+Forecast[\$]

### UHD sales forecasted to exceed FHD in 2019



\* Source : IHS '18.2Q Final+Forecast

\* Note : Standalone digital signage only  
Consumer TVs, along with Commercial Lite and Hospitality TVs used for signage are excluded.

## Why Samsung's QMR series?

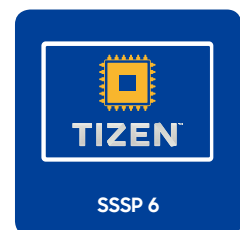
Samsung's superior visual display technology has positioned them as the industry leader in the digital signage market for a decade<sup>1</sup> and Samsung brand having been No.1 in sales for 12 consecutive years in TV by IHS Markit<sup>2</sup>. As an expert in picture quality in the display industry, Samsung is able to deliver best-in-class picture quality through their new QMR series. The signage provides rich and flawless colors, sleek and durable design, powerful performance through SSSP 6 and secured protection. Its reliable, non-glare panels provide better visibility from all angles, allowing businesses to deliver important information 24/7. Samsung's QMR series is also able to upscale the low resolution content to UHD picture quality. For commercial displays, this technology advancement means highly visible signage with unmatched accuracy to help capture the attention of potential customers. It also means savings both in cost and time for businesses who can produce content more inexpensively at a lower resolution and still display it in stunning UHD quality.

<sup>1</sup> Results based on IHS Technology report "Public Displays Market Tracker", 2009 – 2018.

Information is not an endorsement of Samsung. Any reliance on these results is at the third party's own risk.

<sup>2</sup> Results based on IHS Markit, Technology Group, TV Sets Intelligence Service – Premium, Annual Unit and Annual Revenue Basis, 2006 – 2017.

Information is not an endorsement of Samsung. Any reliance on these results is at the third party's own risk. Visit [www.technology.ih.com](http://www.technology.ih.com) for more details.





# Key features



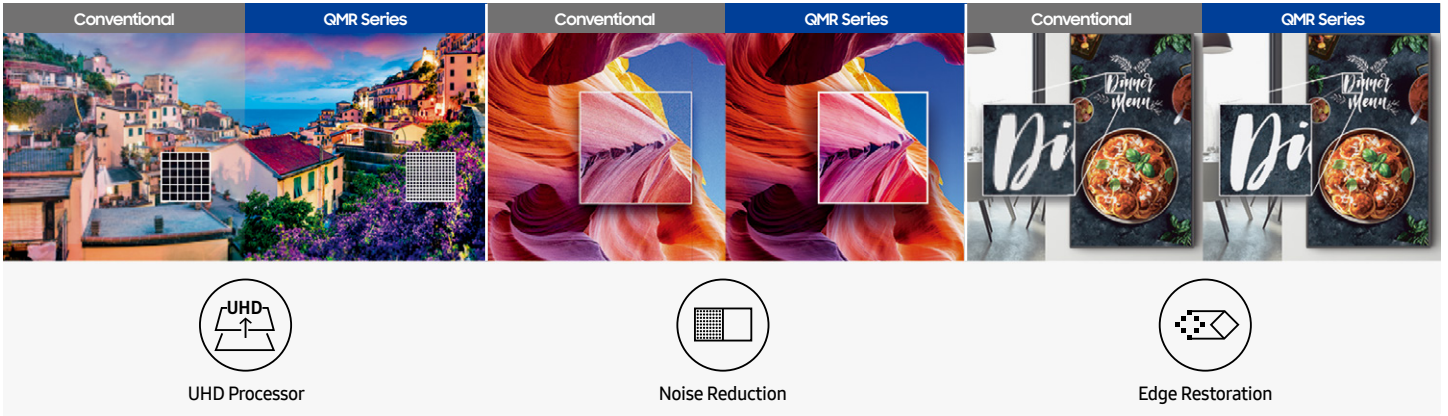
## Incredible 4K picture quality

Samsung's new QMR series is able to capture customer attention by providing an incredibly clear picture, showcasing lifelike images and intricate details better than ever before thanks to ultra high-definition 4K resolution.



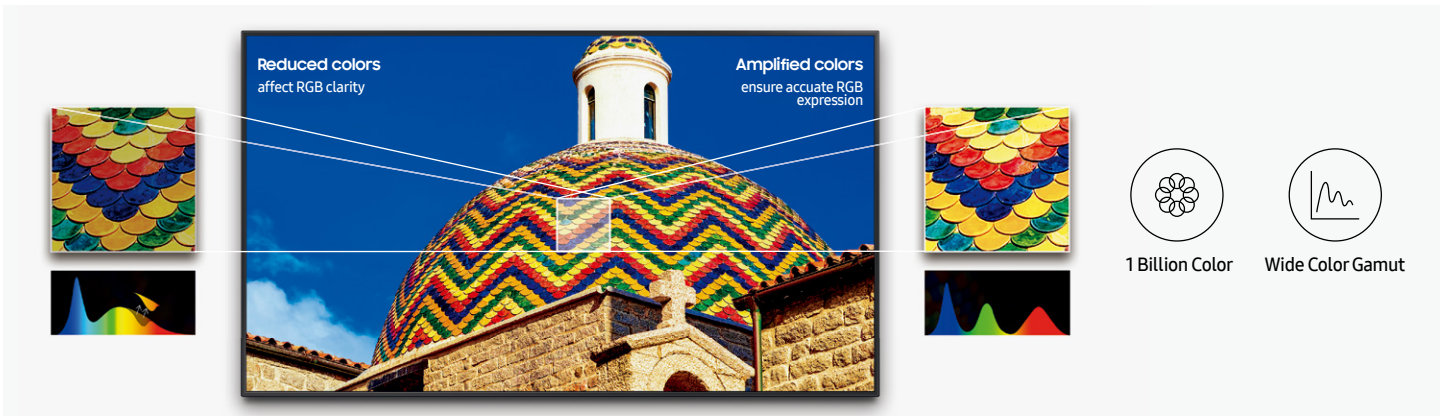
## Perfect view with non-glare display

When clear visibility is essential, the QMR series incorporates key features including up to 500 nit brightness and reliable, non-glare panels that provide better visibility from all angles, anytime of day. The display is ideal for locations such as airports and commuter stations where 24/7 access to clear and accurate information is crucial.



## Intelligent UHD upscaling

Samsung's global leadership in display technology and picture quality spans more than a decade. Thanks to superior semi-conductor technology, Samsung has developed the powerful video processor available. Additionally, intelligent UHD upscaling technology is a cutting-edge solution based on Samsung's proprietary UHD Processor that allows content developed at a lower resolution to be elevated to UHD-level quality. It also performs edge restoration and noise reduction to optimize on-screen text and imagery with crisp edges and fine detail.



## Dynamic Crystal Color

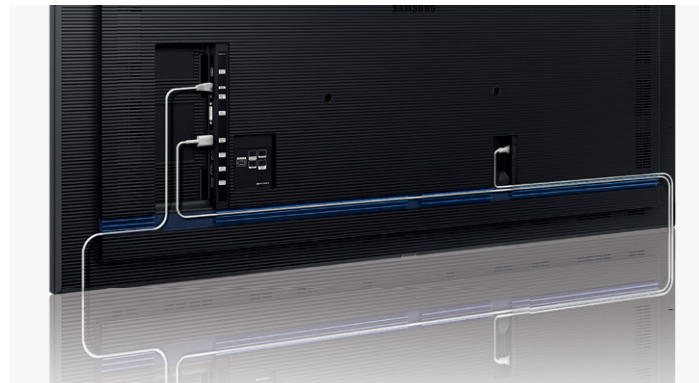
Dynamic Crystal Color is what brings the incredible, lifelike color to Samsung displays. Using 10-bit processing, the displays are able to showcase a wider spectrum of colors — up to a billion different shades — capturing subtle differences for flawless color expression, critical to businesses in ensuring brand consistency across communication channels. The QMR series also features HDR+ functionality that converts standard definition (SDR) content to HDR quality for sharper contrast and more vivid colors.

# Key features



## Slim and symmetrical design

The all-new slim and symmetrical design of the QMR series significantly simplifies wall mounting the display and ensures installation is a seamless process. The display's power inlet direction has been redesigned to sit flush against the wall. The new design sets guarantees a long life cycle ensuring the QMR series will stand the test of time.



## Clean cable management

In a corporate or retail environment, the back of a display is often visible to customers. With the QMR series' new cable guide feature retailers can tuck messy cables away from view. This allows for a clean and more visually-appealing customer shopping experience.



## Samsung Workspace secured by Knox

Samsung Workspace is a powerful new feature fortified by proprietary Knox security technology allowing users to create an enhanced virtual collaboration workspace without needing a PC in the room, or any physical connection. Simply connect a keyboard and mouse to the display and immediately get to work accessing a PC remotely or web-based cloud services such as Microsoft Office 365 and VMWare Horizon.

\* Samsung Workspace feature support may vary by region and market conditions.  
\* The scheduled availability of this feature varies by model.



## Powerful, all-in-one solution

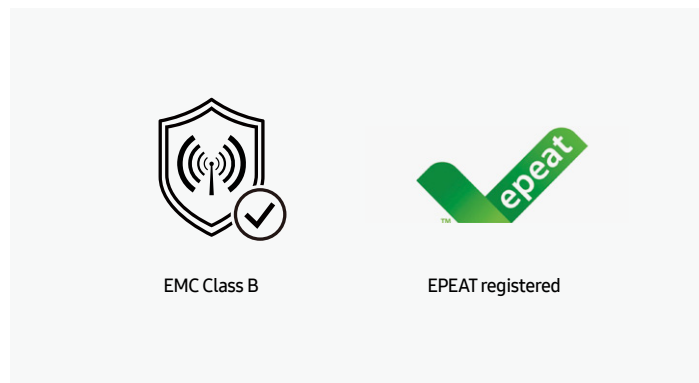
The Samsung SMART Signage Platform (SSSP) is an open-source, all-in-one solution embedded in Samsung SMART signage that simplifies installation and maintenance. With SSSP, there is no need for any external devices to communicate with the server or play digital media enjoying easy development, reinforced capability with multiple web formats, and secured protection.



## Wi-Fi and Bluetooth built-in

The QMR series features a nearly endless range of business use-cases thanks to built-in Wi-Fi and Bluetooth. Wireless connectivity allows for personalized and interactive services including enabling integration with beacon technology in store, while also simplifying how businesses showcase content.

\* Image is for illustrative purposes only, specific application or program may have to be developed for the depicted usage scenario.



## Industry standard certified

QMR displays are EMC class B compliant, providing a safe and healthy viewing environment by meeting strict standards of electromagnetic wave emission and assuring reliable operation even near other electronic equipment. The displays are also registered by EPEAT, the global ecolabel for IT, confirming the hardware is sustainable for the full product lifecycle, from design and production to energy use and recycling.



# Specifications

Model			QM43R	QM49R	QM55R	QM65R	QM75R	
Panel	Diagonal Size	Class	43	49	55	65	75	
		Measured	42.5	48.5	54.6	64.5	74.5	
	Type	Edge LED BLU	Edge LED BLU	Edge LED BLU	Edge LED BLU	Edge LED BLU		
	Resolution	UHD (3840 x 2160)	UHD (3840 x 2160)	UHD (3840 x 2160)	UHD (3840 x 2160)	UHD (3840 x 2160)		
	Pixel Pitch (mm)	0.2451 x 0.2451	0.093 x 0.279	0.105 x 0.315	0.372 x 0.372	0.42975 x 0.42975		
	Active Display Area	941.184 (H) x 529.416 (V)	1073.78(H) x 604.00(V)	1209.6(H) x 680.4(V)	1428.48 (H) x 803.52 (V)	1650.24 (H) x 928.26 (V)		
	Brightness(Typ.)	500	500	500	500	500		
	Contrast Ratio (Typ.)	4000:1	4000:1	4000:1	4000:1	4000:1		
	Viewing Angle(H/V)	178/178	178/178	178/178	178/178	178/178		
	Response Time (G to G)	8ms(Typ.)	8ms(Typ.)	8ms(Typ.)	8ms(Typ.)	8ms(Typ.)		
	Display Colors	16.7M	16.7M	16.7M	16.7M	16.7M		
	Color Gamut	92%	92%	92%	92%	92%		
	Operation Hour	24/7	24/7	24/7	24/7	24/7		
	Haze	44%	25%	25%	25%	44%		
Display	Dynamic C/R	MEGA	MEGA	MEGA	MEGA	MEGA		
	H-Scanning Frequency	30 ~ 81kHz	30 ~ 81kHz	30 ~ 81kHz	30 ~ 81kHz	30 ~ 81kHz		
	V-Scanning Frequency	48 ~ 75Hz	48 ~ 75Hz	48 ~ 75Hz	48 ~ 75Hz	48 ~ 75Hz		
	Maximum Pixel Frequency	594MHz	594MHz	594MHz	594MHz	594MHz		
Sound	Speaker Type	Built in Speaker(10W +10W)	Built in Speaker(10W +10W)	Built in Speaker(10W +10W)	Built in Speaker(10W +10W)	Built in Speaker(10W +10W)		
Connectivity	INPUT	RGB	DVI-D, Display Port1.2 (1)	DVI-D, Display Port1.2 (1)	DVI-D, Display Port1.2 (1)	DVI-D, Display Port1.2 (1)	DVI-D, Display Port1.2 (1)	
		VIDEO	HDMI 2.0 (2)	HDMI 2.0 (2)	HDMI 2.0 (2)	HDMI 2.0 (2)	HDMI 2.0 (2)	
		HDCP	HDCP2.2	HDCP2.2	HDCP2.2	HDCP2.2	HDCP2.2	
		AUDIO	Stereo Mini Jack, DVI, HDMI	Stereo Mini Jack, DVI, HDMI	Stereo Mini Jack, DVI, HDMI	Stereo Mini Jack, DVI, HDMI	Stereo Mini Jack, DVI, HDMI	
		USB	USB 2.0 x 2	USB 2.0 x 2	USB 2.0 x 2	USB 2.0 x 2	USB 2.0 x 2	
	OUTPUT	RGB	HDMI 2.0 (Loop-out)	HDMI 2.0 (Loop-out)	HDMI 2.0 (Loop-out)	HDMI 2.0 (Loop-out)	HDMI 2.0 (Loop-out)	
		VIDEO	N/A	N/A	N/A	N/A	N/A	
		AUDIO	Stereo Mini Jack	Stereo Mini Jack	Stereo Mini Jack	Stereo Mini Jack	Stereo Mini Jack	
		Power Out	N/A	N/A	N/A	N/A	N/A	
		USB	N/A	N/A	N/A	N/A	N/A	
	EXTERNAL CONTROL		RS232C(in/out) thru stereo jack, RJ45	RS232C(in/out) thru stereo jack, RJ45	RS232C(in/out) thru stereo jack, RJ45	RS232C(in/out) thru stereo jack, RJ45	RS232C(in/out) thru stereo jack, RJ45	
	EXTERNAL SENSOR		IR	IR	IR	IR	IR	
	Tuner		N/A	N/A	N/A	N/A	N/A	
	Power	Type		Internal	Internal	Internal	Internal	Internal
Power Supply			AC100 - 240 V~ (+/- 10 %), 50/60 Hz	AC100 - 240 V~ (+/- 10 %), 50/60 Hz	AC100 - 240 V~ (+/- 10 %), 50/60 Hz	AC100 - 240 V~ (+/- 10 %), 50/60 Hz	AC100 - 240 V~ (+/- 10 %), 50/60 Hz	
Power Consumption		Max[W/h]		110	138	143	181.5	231
		Typical[W/h]		74	103	108	131	178
		Rating[W/h]		100	125	130	165	210
		BTU(Max)		375.1	470.6	487.6	618.9	787.7
		Sleep mode		0.5	0.5	0.5	0.5	0.5
		Off mode		N/A	N/A	N/A	N/A	N/A
Mechanical Spec		Dimension(mm)	Set	9675 x 5577 x 48.3	10992 x 6315 x 46.3	12351 x 7079 x 46.3	14539 x 8310 x 46.3	16811 x 9601 x 49.7
			Package	1095 x 676 x 151	1247 x 772 x 152	1402 x 858 x 163	1611 x 973 x 185	1871 x 1127 x 223
	Weight (kg)	Set	10	13.5	18.1	24.9	38.3	
		Package	13.3	18	23.6	33.3	49	
	VESA Mount		200 X 200	200 X 200	200 X 200	400 X 400	400 X 400	
	Protection Glass		N/A	N/A	N/A	N/A	N/A	
	Stand Type		Foot Stand (Optional)	Foot Stand (Optional)	Foot Stand (Optional)	No	No	
	Bezel Width (Top/Side/Bot) (mm)		9.2mm(U/L/R), 11.2mm(B)	9.2mm(U/L/R), 11.2mm(B)	9.2mm(U/L/R), 11.2mm(B)	9.2mm(U/L/R), 11.2mm(B)	11.5mm(U/L/R), 12.5mm(B)	
Operation	Operating Temperature		0°C~ 40°C	0°C~ 40°C	0°C~ 40°C	0°C~ 40°C	0°C~ 40°C	
	Humidity		10~80%	10~80%	10~80%	10~80%	10~80%	
Feature	Key		UHD Signage Display Slim & Light Signage with Built-in MagicInfo S6, S5SP 6.0	UHD Signage Display Slim & Light Signage with Built-in MagicInfo S6, S5SP 6.0	UHD Signage Display Slim & Light Signage with Built-in MagicInfo S6, S5SP 6.0	UHD Signage Display Slim & Light Signage with Built-in MagicInfo S6, S5SP 6.0	UHD Signage Display Slim & Light Signage with Built-in MagicInfo S6, S5SP 6.0	
		Special	H/W	Temperature Sensor,Pivot Display, Clock Battery(168hrs Clock Keeping), Built in Speaker(10W 2ch), Video Wall Daisy Chain(HDCP2.2:4EA, HDCP1.4:7EA), IP5x Rating, Wi-Fi/BT	Temperature Sensor,Pivot Display, Clock Battery(168hrs Clock Keeping), Built in Speaker(10W 2ch), Video Wall Daisy Chain(HDCP2.2:4EA, HDCP1.4:7EA), IP5x Rating, Wi-Fi/BT	Temperature Sensor,Pivot Display, Clock Battery(168hrs Clock Keeping), Built in Speaker(10W 2ch), Video Wall Daisy Chain(HDCP2.2:4EA, HDCP1.4:7EA), IP5x Rating, Wi-Fi/BT	Temperature Sensor,Pivot Display, Clock Battery(168hrs Clock Keeping), Built in Speaker(10W 2ch), Video Wall Daisy Chain(HDCP2.2:4EA, HDCP1.4:7EA), IP5x Rating, Wi-Fi/BT	Temperature Sensor,Pivot Display, Clock Battery(168hrs Clock Keeping), Built in Speaker(10W 2ch), Video Wall Daisy Chain(HDCP2.2:4EA, HDCP1.4:7EA), IP5x Rating, Wi-Fi/BT
	Processor	S/W	Auto Source Switching & Recovery, LFD Home UI, Button Lock, Hot key option, Plug&Play (Initial Setting)	Auto Source Switching & Recovery, LFD Home UI, Button Lock, Hot key option, Plug&Play (Initial Setting)	Auto Source Switching & Recovery, LFD Home UI, Button Lock, Hot key option, Plug&Play (Initial Setting)	Auto Source Switching & Recovery, LFD Home UI, Button Lock, Hot key option, Plug&Play (Initial Setting)	Auto Source Switching & Recovery, LFD Home UI, Button Lock, Hot key option, Plug&Play (Initial Setting)	
		Processor	Coretex A721.7GHz Quad-Core CPU	Coretex A721.7GHz Quad-Core CPU	Coretex A721.7GHz Quad-Core CPU	Coretex A721.7GHz Quad-Core CPU	Coretex A721.7GHz Quad-Core CPU	
		On-Chip Cache Memory	L1 Instruction Cache : 48KB L1 Data Cache : 32KB L2 Cache : 2MB	L1 Instruction Cache : 48KB L1 Data Cache : 32KB L2 Cache : 2MB	L1 Instruction Cache : 48KB L1 Data Cache : 32KB L2 Cache : 2MB	L1 Instruction Cache : 48KB L1 Data Cache : 32KB L2 Cache : 2MB	L1 Instruction Cache : 48KB L1 Data Cache : 32KB L2 Cache : 2MB	
		Clock Speed	1.7GHz	1.7GHz	1.7GHz	1.7GHz	1.7GHz	
		Main Memory Interface	2.5GB LPDDR41.5GHz 64bit	2.5GB LPDDR41.5GHz 64bit	2.5GB LPDDR41.5GHz 64bit	2.5GB LPDDR41.5GHz 64bit	2.5GB LPDDR41.5GHz 64bit	
		"Internal Player (Embedded H/W)"	Graphics	Graphic resolution : 1920x1080 Output resolution : 3840x2160 (Scale up from graphic processing result.)	Graphic resolution : 1920x1080 Output resolution : 3840x2160 (Scale up from graphic processing result.)	Graphic resolution : 1920x1080 Output resolution : 3840x2160 (Scale up from graphic processing result.)	Graphic resolution : 1920x1080 Output resolution : 3840x2160 (Scale up from graphic processing result.)	Graphic resolution : 1920x1080 Output resolution : 3840x2160 (Scale up from graphic processing result.)
			Storage (FDM)	8GB (3.88GB Occupied by O/S, 4.12GB Available)	8GB (3.88GB Occupied by O/S, 4.12GB Available)	8GB (3.88GB Occupied by O/S, 4.12GB Available)	8GB (3.88GB Occupied by O/S, 4.12GB Available)	8GB (3.88GB Occupied by O/S, 4.12GB Available)
			Multimedia	*Video Decoder : MPEG-1/2/4, H.263, H.264/AVC, UHD H.264/AVC, VC-1, AVS+, HEVC, JPEG, PNG, VP8, VP9 *Audio Decoder: AC3 (DD), MPEG	*Video Decoder : MPEG-1/2/4, H.263, H.264/AVC, UHD H.264/AVC, VC-1, AVS+, HEVC, JPEG, PNG, VP8, VP9 *Audio Decoder: AC3 (DD), MPEG	*Video Decoder : MPEG-1/2/4, H.263, H.264/AVC, UHD H.264/AVC, VC-1, AVS+, HEVC, JPEG, PNG, VP8, VP9 *Audio Decoder: AC3 (DD), MPEG	*Video Decoder : MPEG-1/2/4, H.263, H.264/AVC, UHD H.264/AVC, VC-1, AVS+, HEVC, JPEG, PNG, VP8, VP9 *Audio Decoder: AC3 (DD), MPEG	*Video Decoder : MPEG-1/2/4, H.263, H.264/AVC, UHD H.264/AVC, VC-1, AVS+, HEVC, JPEG, PNG, VP8, VP9 *Audio Decoder: AC3 (DD), MPEG
		IO Ports	USB 2.0	USB 2.0	USB 2.0	USB 2.0	USB 2.0	
		Operating System		Tizen 4.0 (VDLinux)	Tizen 4.0 (VDLinux)	Tizen 4.0 (VDLinux)	Tizen 4.0 (VDLinux)	Tizen 4.0 (VDLinux)
	Certification	Safety		60950-1	60950-1	60950-1	60950-1	
		EMC		Class B	Class B	Class B	Class B	
Environment			ENERGY STAR 70 (USA)	ENERGY STAR 70 (USA)	ENERGY STAR 70 (USA), Epeat	ENERGY STAR 70 (USA), Epeat	ENERGY STAR 70 (USA), Epeat	
Accessories	Included		Quick Setup Guide, Warranty Card, Power Cord, Remote Controller, Batteries	Quick Setup Guide, Warranty Card, Power Cord, Remote Controller, Batteries	Quick Setup Guide, Warranty Card, Power Cord, Remote Controller, Batteries	Quick Setup Guide, Warranty Card, Power Cord, Remote Controller, Batteries	Quick Setup Guide, Warranty Card, Power Cord, Remote Controller, Batteries	
	Optional	Stand		STN-L4355F	STN-L4355F	No	No	
		Mount		WMN4070SE	WMN4070SE	WMN4070SE	WMN4277SE WMN6575SE	
		Specialty		CML400XK	CML400XK	CML400XK	CLM450K CLM450K	
		Media Player		N/A	N/A	N/A	N/A	

## **About Samsung Electronics Co., Ltd.**

Samsung Electronics Co., Ltd. inspires the world and shapes the future with transformative ideas and technologies. The company is redefining the worlds of TVs, smartphones, wearable devices, tablets, cameras, digital appliances, medical equipment, network systems, and semiconductor and LED solutions. For the latest news, please visit the Samsung Newsroom at [news.samsung.com](http://news.samsung.com).

## **SMART Signage**

For more information about Samsung SMART Signage QMR Series Displays, visit [www.samsung.com/business](http://www.samsung.com/business) or [www.samsung.com/displaysolutions](http://www.samsung.com/displaysolutions)

Copyright © 2019 Samsung Electronics Co. Ltd. All rights reserved. Samsung is a registered trademark of Samsung Electronics Co. Ltd. Specifications and designs are subject to change without notice. Non-metric weights and measurements are approximate. All data were deemed correct at time of creation. Samsung is not liable for errors or omissions. All brand, product, service names and logos are trademarks and/or registered trademarks of their respective owners and are hereby recognized and acknowledged.

Samsung Electronics Co., Ltd.  
416, Maetan 3-dong, Yeongtong-gu, Suwon-si, Gyeonggi-do 443-772, Korea

2019-09

## Digitales Schaufenster Display Mit 50" QMR Bildschirm

DISHOP50ESF



- Geeignet für 43", 50" und 55" Bildschirme
- Spezielle VESA-Vorrichtung mit zahlreichen Befestigungsmöglichkeiten
- Lüftungsschlitze für Temperaturkontrolle auf der Rückseite

## Digitales Schaufenster Display Mit 50" QMR Bildschirm

DISHOP50ESF

SKU	Maße (mm) (A x B x C)	Ausrichtung	Sichtbare Größe (mm)	Format (mm)	Leistung (W)
DISHOP50ESF	1099 x 1955 x 500	Senkrecht	-	50"	-

Beleuchtung	Lichtfarbe (K)	Helligkeit (cd)	Lichtintensität (lx)	Nettogewicht (kg)	Gesamtgewicht (kg)
Nein	-	-	-	59,00	86,00

Verpackungseinheit Breite (mm)	Verpackungseinheit Höhe (mm)	Verpackungseinheit Länge (mm)	Palette Stückzahl	Palettengewicht (kg)	Palettenart
1 200	800	1 964	1	-	EUR

Produktzertifizierung	EAN
-	8596052144868



## Digitales Schaufenster Display Mit 55" QMR Bildschirm

DISHOP55ESF



- Geeignet für 43", 50" und 55" Bildschirme
- Spezielle VESA-Vorrichtung mit zahlreichen Befestigungsmöglichkeiten
- Lüftungsschlitze für Temperaturkontrolle auf der Rückseite

## Digitales Schaufenster Display Mit 55" QMR Bildschirm

DISHOP55ESF

SKU	Maße (mm) (A x B x C)	Ausrichtung	Sichtbare Größe (mm)	Format (mm)	Leistung (W)
DISHOP55ESF	1235 x 1994 x 500	Senkrecht	-	55"	143 W

Beleuchtung	Lichtfarbe (K)	Helligkeit (cd)	Lichtintensität (lx)	Nettogewicht (kg)	Gesamtgewicht (kg)
Nein	-	-	-	63,50	91,50

Verpackungseinheit Breite (mm)	Verpackungseinheit Höhe (mm)	Verpackungseinheit Länge (mm)	Palette Stückzahl	Palettengewicht (kg)	Palettenart
1 200	800	1 964	1	-	EUR

Produktzertifizierung	EAN
-	8596052120480

## Digitales Schaufenster Display Mit 43" QMR Bildschirm

DISHOP43ESF



- Geeignet für 43", 50" und 55" Bildschirme
- Spezielle VESA-Vorrichtung mit zahlreichen Befestigungsmöglichkeiten
- Lüftungsschlitze für Temperaturkontrolle auf der Rückseite

## Digitales Schaufenster Display Mit 43" QMR Bildschirm

DISHOP43ESF

SKU	Maße (mm) (A x B x C)	Ausrichtung	Sichtbare Größe (mm)	Format (mm)	Leistung (W)
DISHOP43ESF	968 x 1919 x 500	Senkrecht	-	43"	110 W

Beleuchtung	Lichtfarbe (K)	Helligkeit (cd)	Lichtintensität (lx)	Nettogewicht (kg)	Gesamtgewicht (kg)
Nein	-	-	-	55,50	81,50

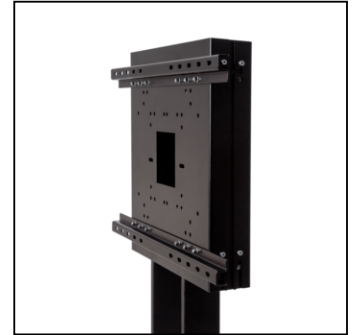
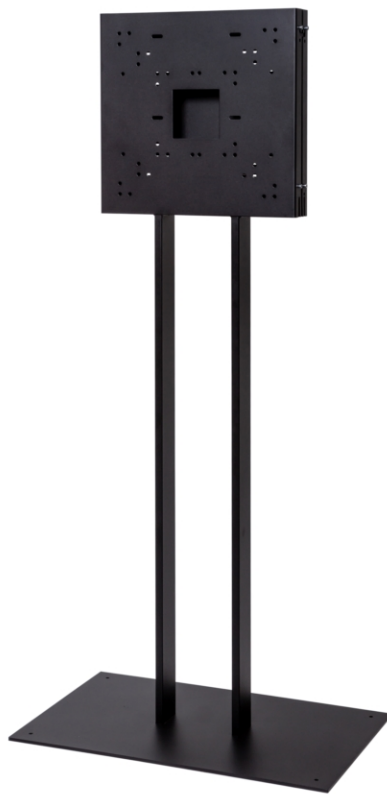
Verpackungseinheit Breite (mm)	Verpackungseinheit Höhe (mm)	Verpackungseinheit Länge (mm)	Palette Stückzahl	Palettengewicht (kg)	Palettenart
1 200	800	1 964	1	-	EUR

Produktzertifizierung	EAN
-	8596052120466



## Digitales Schaufenster Display

DISHOPUNI



- Geeignet für 43", 50" und 55" Bildschirme
- Spezielle VESA-Vorrichtung mit zahlreichen Befestigungsmöglichkeiten
- Lüftungsschlitze für Temperaturkontrolle auf der Rückseite

## Digitales Schaufenster Display

DISHOPUNI

SKU	Maße (mm) (A x B x C)	Ausrichtung	Sichtbare Größe (mm)	Format (mm)	Leistung (W)
DISHOPUNI	800 x 1800 x 500	Senkrecht	-	universal	-

Beleuchtung	Lichtfarbe (K)	Helligkeit (cd)	Lichtintensität (lx)	Nettogewicht (kg)	Gesamtgewicht (kg)
Nein	-	-	-	45,50	68,00

Verpackungseinheit Breite (mm)	Verpackungseinheit Höhe (mm)	Verpackungseinheit Länge (mm)	Palette Stückzahl	Palettengewicht (kg)	Palettenart
1 200	800	1 964	1	-	EUR

Produktzertifizierung	EAN
-	8596052083761